



## Product

DocStar® ECM ESRI® ArcGIS™

## Benefits

- ▶ Web access for document retrieval
- ▶ Seamless integration with ESRI ArcGIS
- ▶ Hosted (SaaS) or on premises
- ▶ Find documents instantly by clicking on parcels or features
- ▶ Quickly apply geo-coordinates to groups of documents
- ▶ ArcGIS Server is not required

## Your maps, your content within your browser-based portal

DocStar ECM ESRI ArcGIS provides a conduit for organizations to easily view specific Geographic Information System (GIS) spatial information and related documents in seconds. Users can easily access GIS layers and features while instantly displaying related GIS maps, data and documents—all with the click of a button.

## Make better-informed decisions

Organizations are faced with the necessity to be more efficient, provide better service, and comply with innumerable regulations and standards. Like most organizations, you are probably drowning in paper.

DocStar ESRI ArcGIS provides a comprehensive feature-rich document management solution. Gain seamless access to documents and GIS information through a browser-based portal.

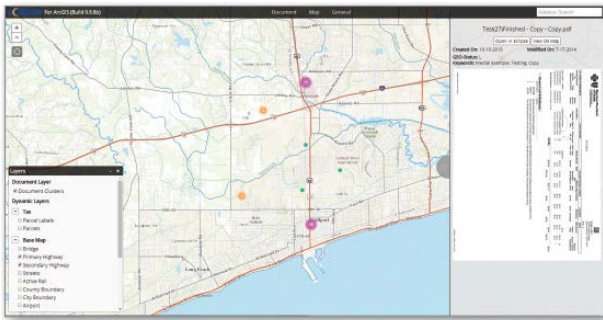
Agencies enhance their processes by linking important documents to GIS maps and data. Your spatially-enabled documents are accessible 24/7, on any device.



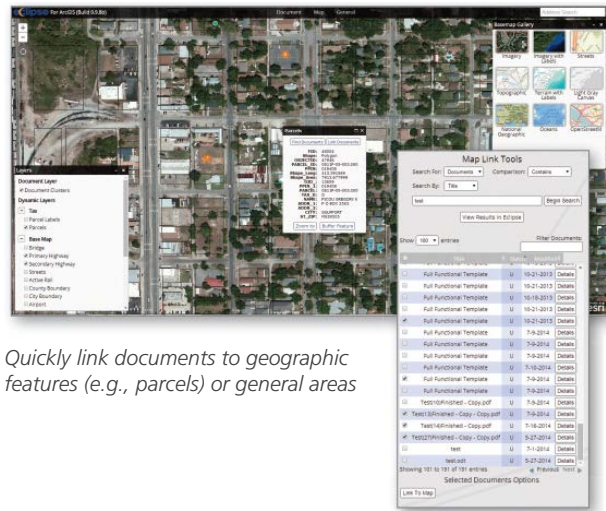
*Multi-Device and Multi-Browser Compatible*



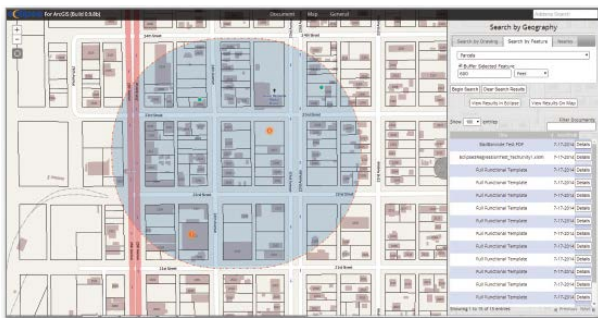
*Esri compatible*



Easily access all of your maps and data through your browser



Quickly link documents to geographic features (e.g., parcels) or general areas



Geographically retrieve all documents associated with an area, parcel or feature

## About DocStar

Helping businesses translate vision into action for more than 20 years, DocStar delivers a flexible and innovative enterprise content management and process automation platform. Easy to implement and use—both in the cloud and on premises—DocStar proven technology and global process expertise empowers organizations to operate at peak performance, navigate change, and grow.



Contact us for more information on DocStar products and services

+1.888.362.7827 x2735 info@docstar.com www.docstar.com

The contents of this document are for informational purposes only and are subject to change without notice. DocStar, a division of Epicor Software Corporation, makes no guarantee, representations, or warranties with regard to the enclosed information and specifically disclaims, to the full extent of the law, any applicable implied warranties, such as fitness for a particular purpose, merchantability, satisfactory quality, or reasonable skill and care. This document and its contents, including the viewpoints, dates, and functional content expressed herein are believed to be accurate as of its date of publication, May 2017. The usage of any DocStar products or services is subject to Epicor standard terms and conditions then in effect. Usage of the solution(s) described in this document with other Epicor software or third-party products may require the purchase of licenses for such other products. DocStar, ESRI, ArcGIS and the DocStar logo are trademarks or registered trademarks of Epicor Software Corporation in the United States, and in certain other countries and/or the EU. Copyright © 2017 Epicor Software Corporation. All rights reserved.